

Alaska Department of Fish and Game

Habitat Section
Southeast Region



191-20-13800-2038 Tributary 5

ADDITION

Water body name: Noodle Creek

Survey date: 7/21/2024

Quad: Icy Bay D2, D3

Species & Lifestage:

Upper Reach Latitude: 59.983271 **Longitude:** -141.602534

Survey crew: NJ, DK, CD

Lower Reach Latitude: 59.983104 **Longitude:** -141.604182

Findings: We surveyed this uncataloged stream using baited minnow traps and GPS and captured juvenile coho salmon. This stream is small at about 3 ft wide and has steady flow with sandy substrate. Fish habitat features include resting pools and woody cover. Upstream was not surveyed due to time, but stream presumably seeps out of ground because it heads towards the road but there was no road crossing found (Table 1; Figures 1–3).

Recommendations: Add this uncataloged stream to the anadromous waters catalog for rearing coho salmon up to waypoint 673 (Figure 4).

Nomination: Pending

Table 1.–191-20-13800-2038 tributary 5 survey data.

Waypoint	Latitude	Longitude	Notes	Stream Width ft	Stream Substrate	Habitat Features	Gradient %	Sample Effort	Sample Results
673	59.983285	-141.602594	Small stream about 3 ft wide with flow. Sandy and small gravel substrate. Goes into larger creek not far downstream of here. Several pools seen for fish.	2-4	Sand		1-2	MT	3 CO



Figure 1.–Coho salmon caught at waypoint 673.



Figure 2.—Looking upstream at waypoint 673.



Figure 3.—Looking downstream at waypoint 673.

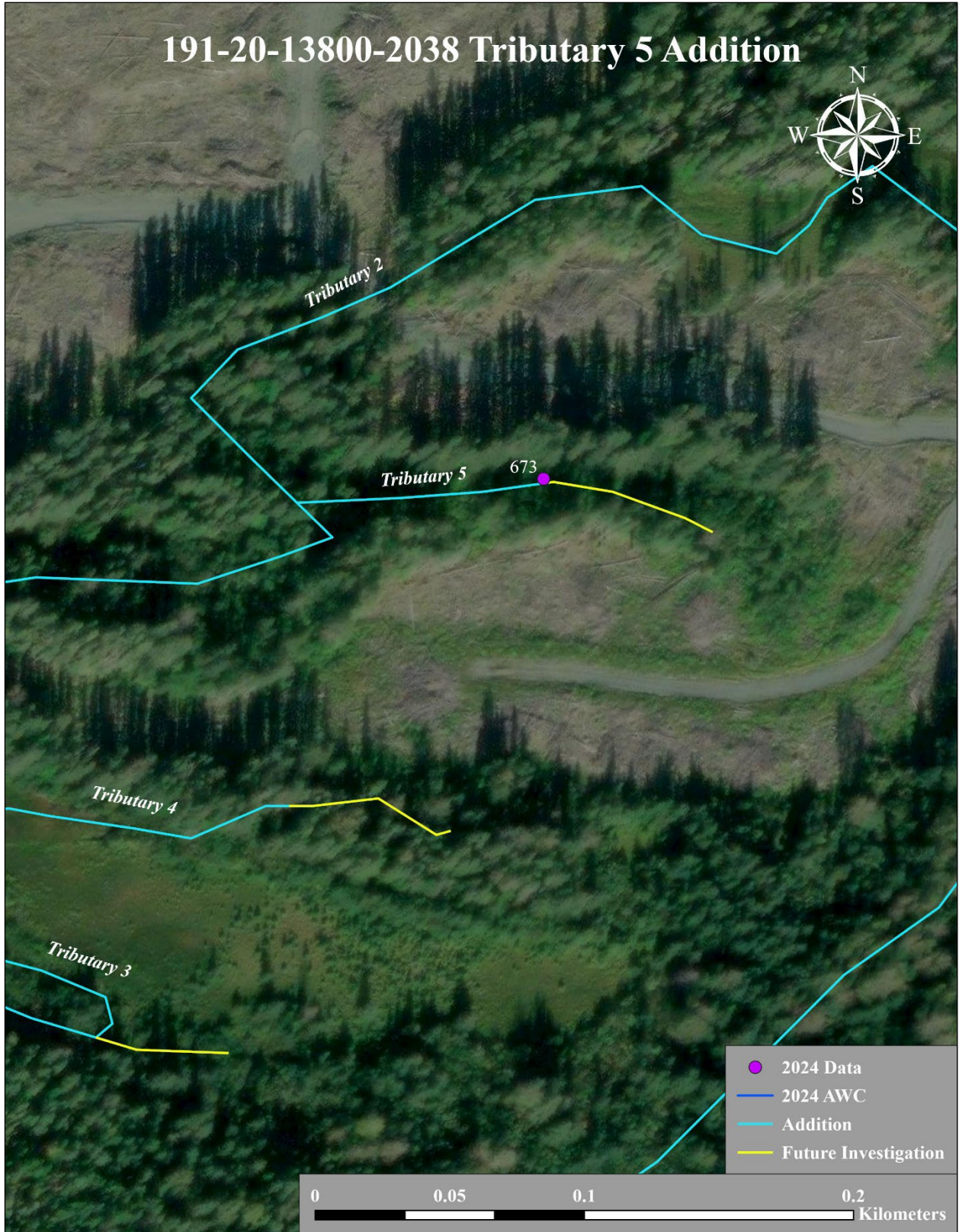


Figure 4.—191-20-13800-2038 tributary 5 addition map.